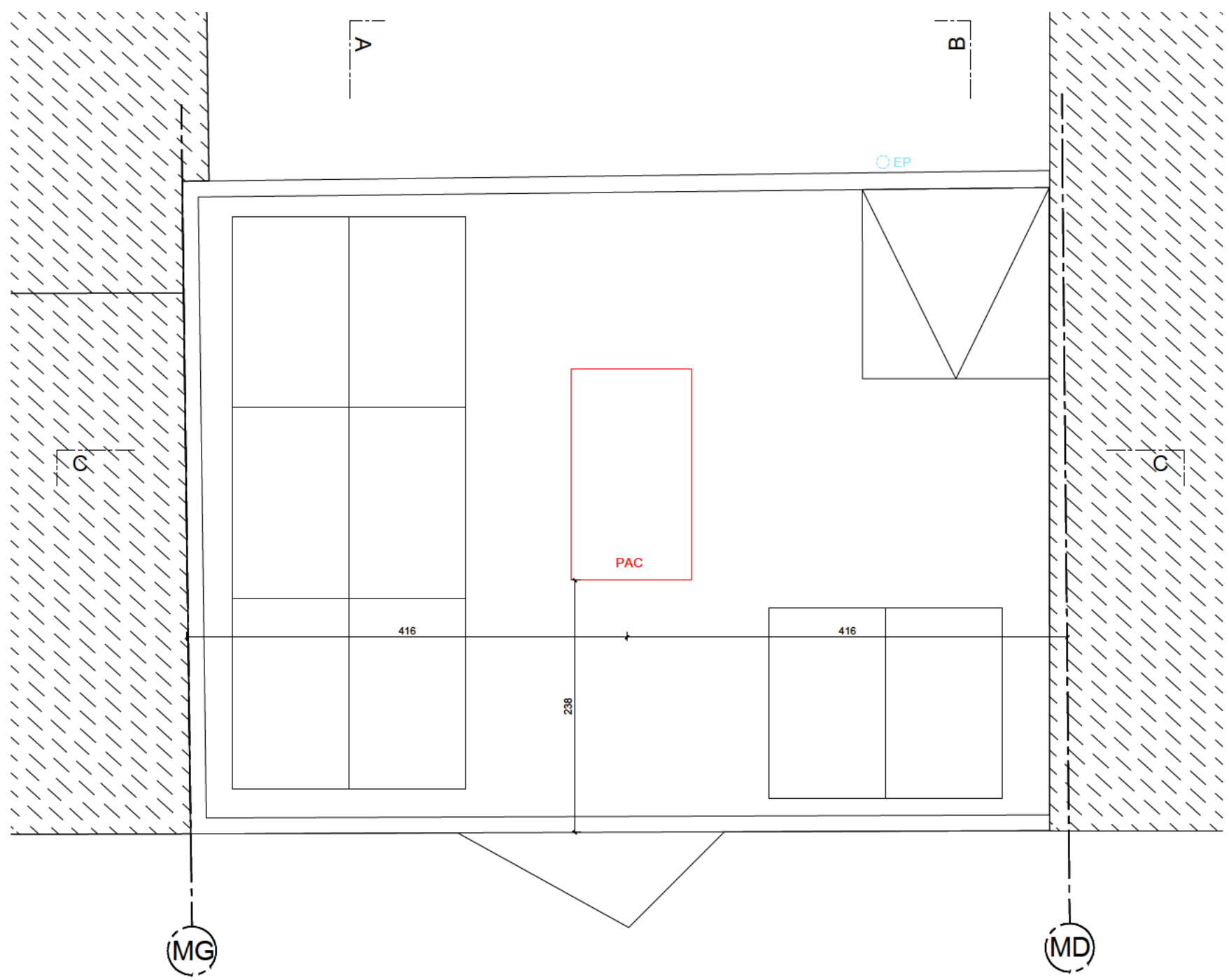
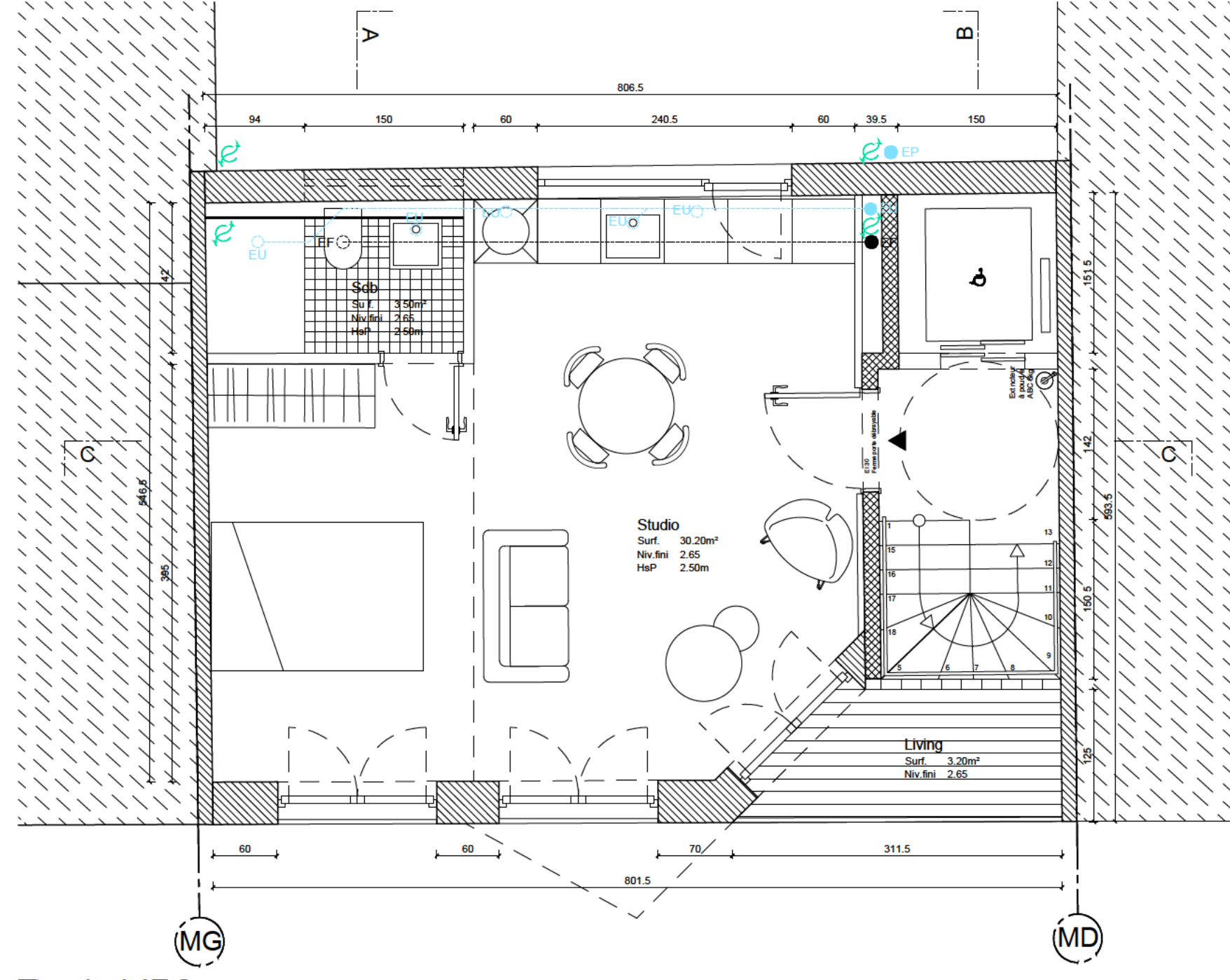


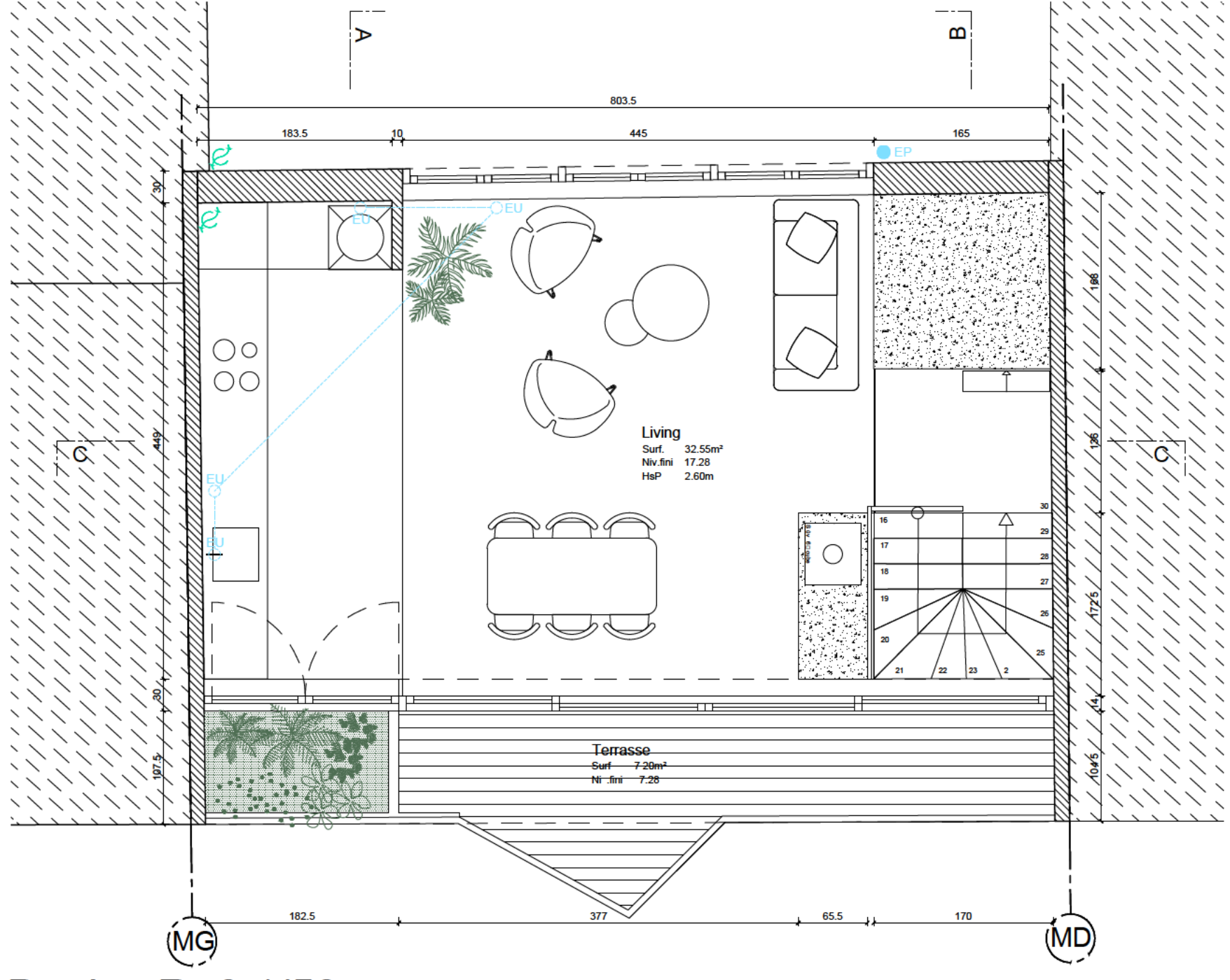
R+2 et R+3 1/50



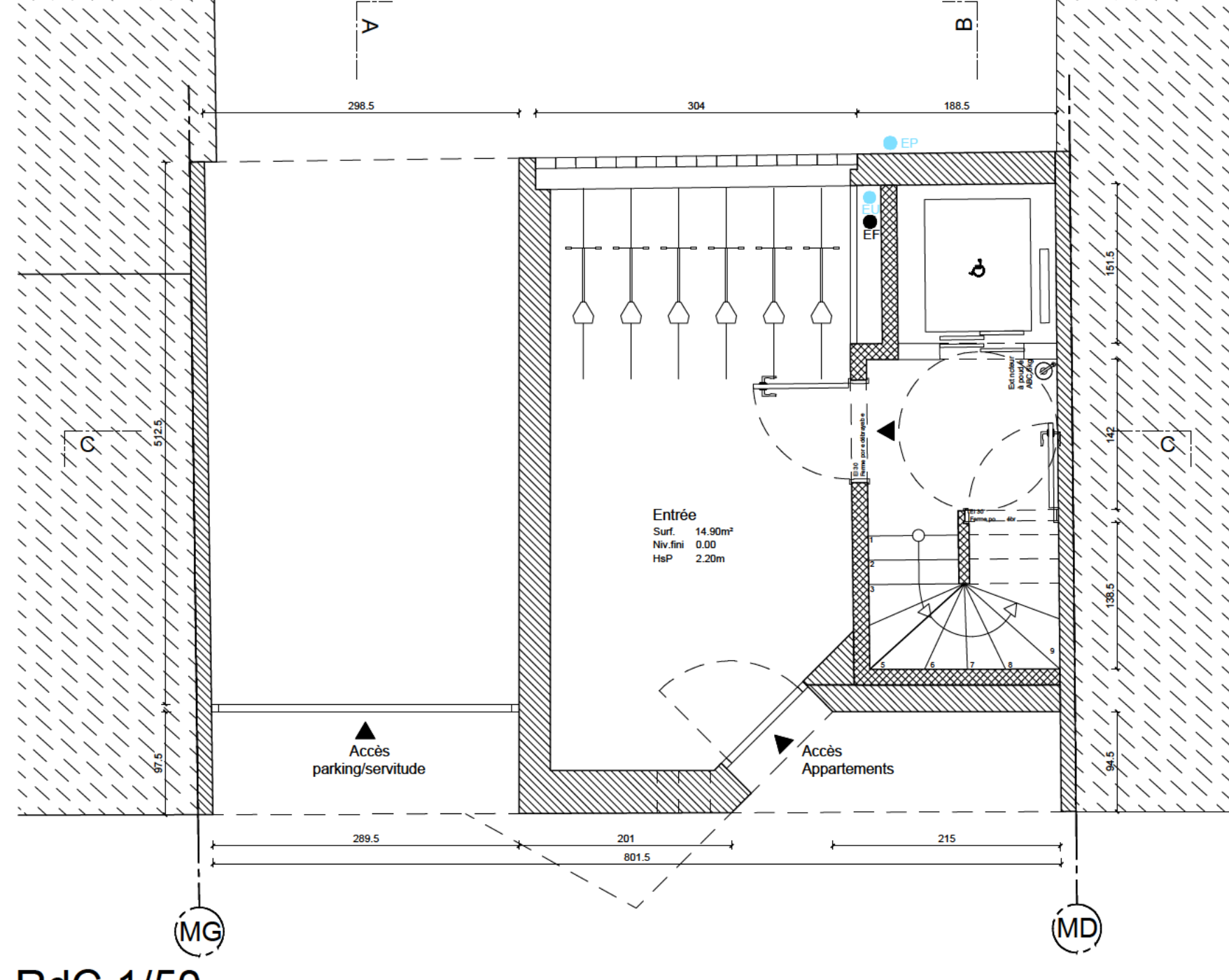
Toiture 1/50



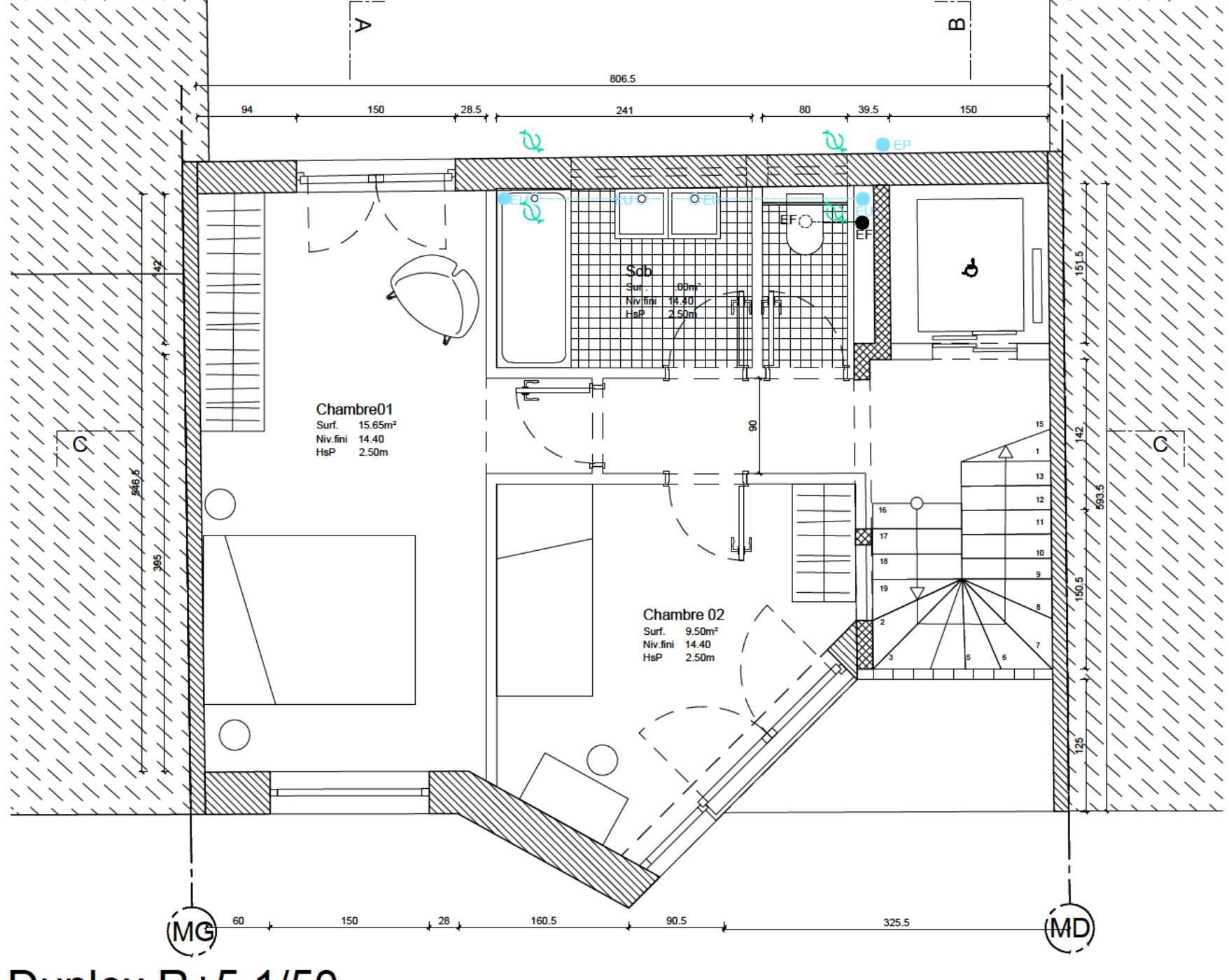
R+1 1/50



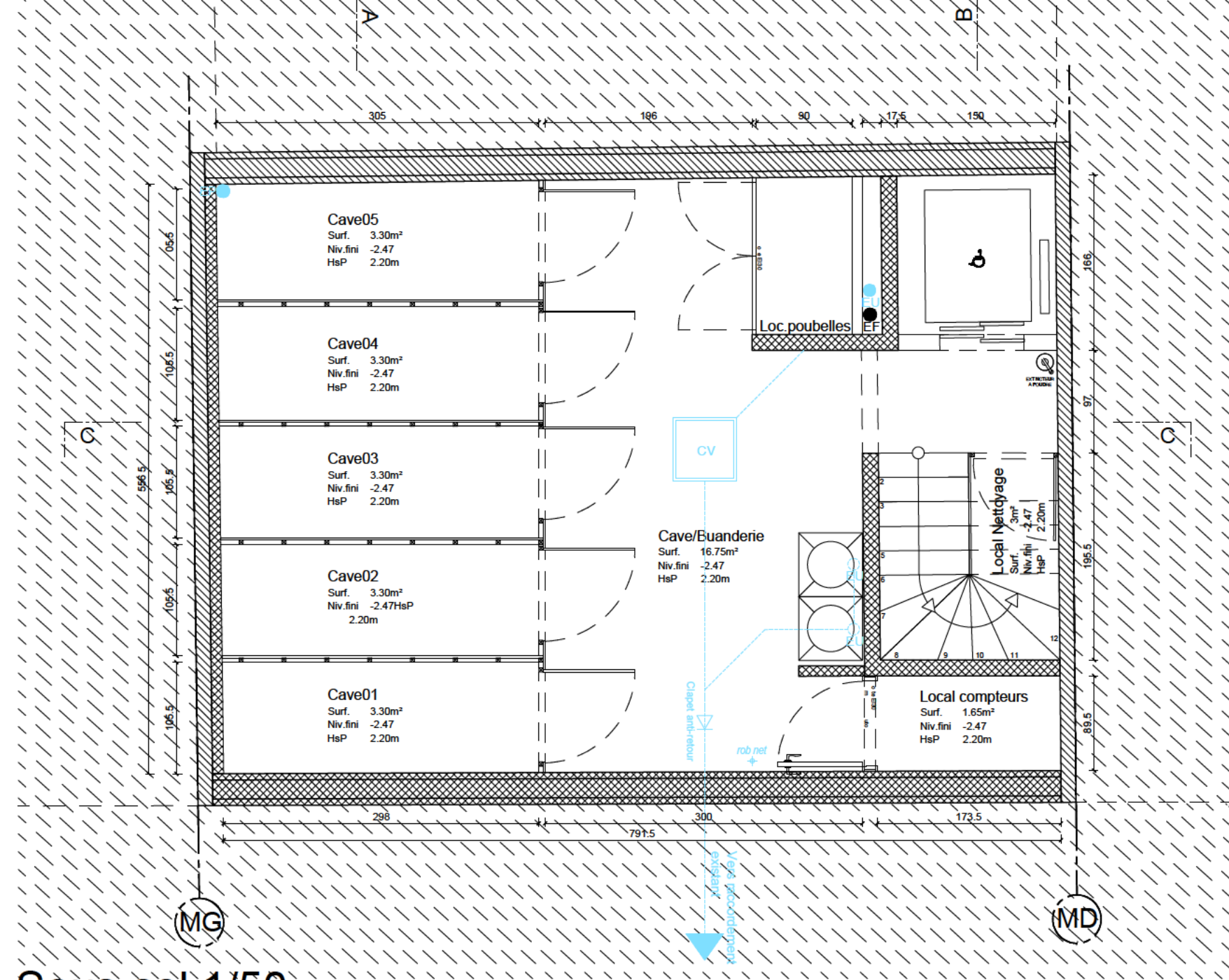
Duplex R+6 1/50



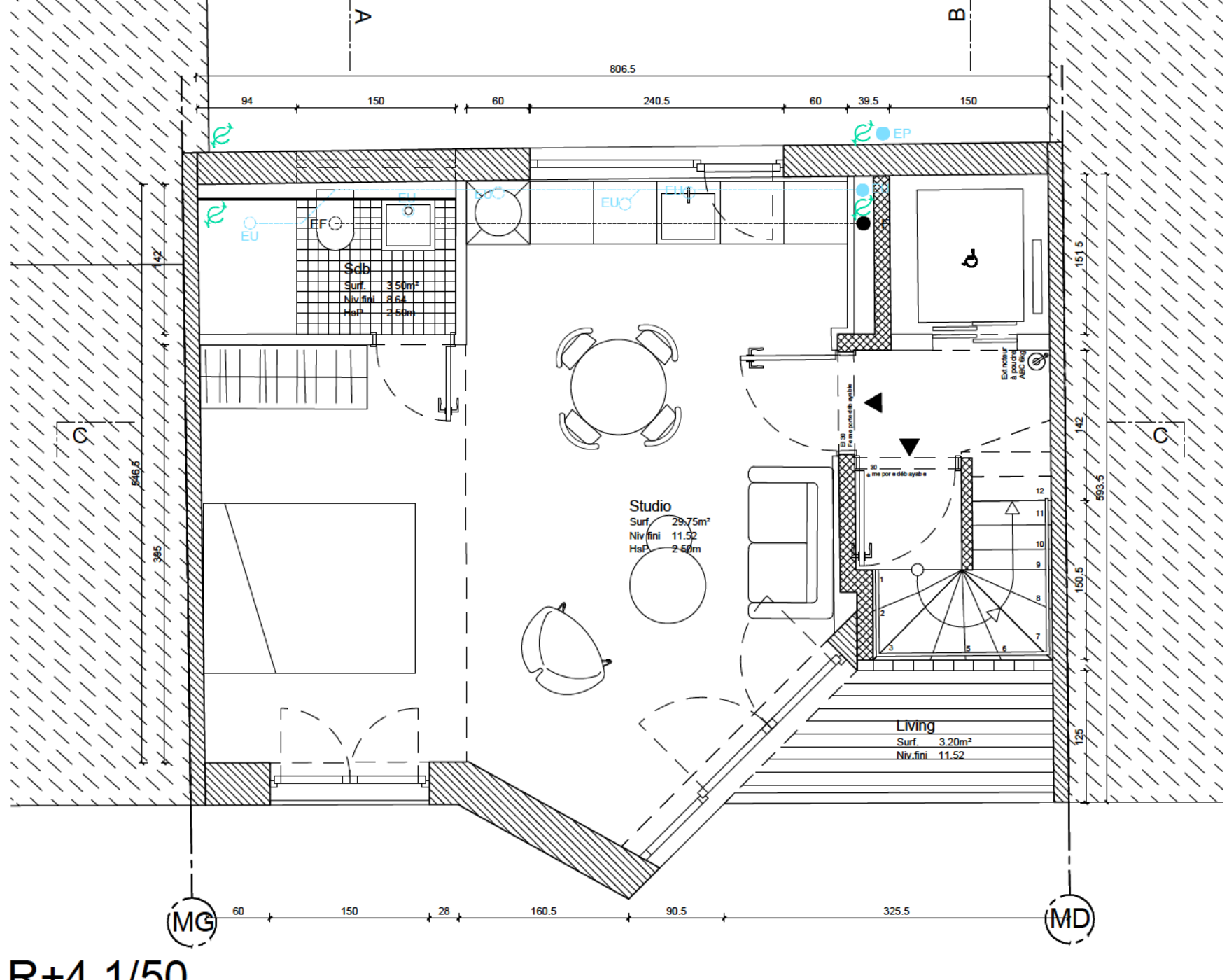
RdC 1/50



Duplex R+5 1/50



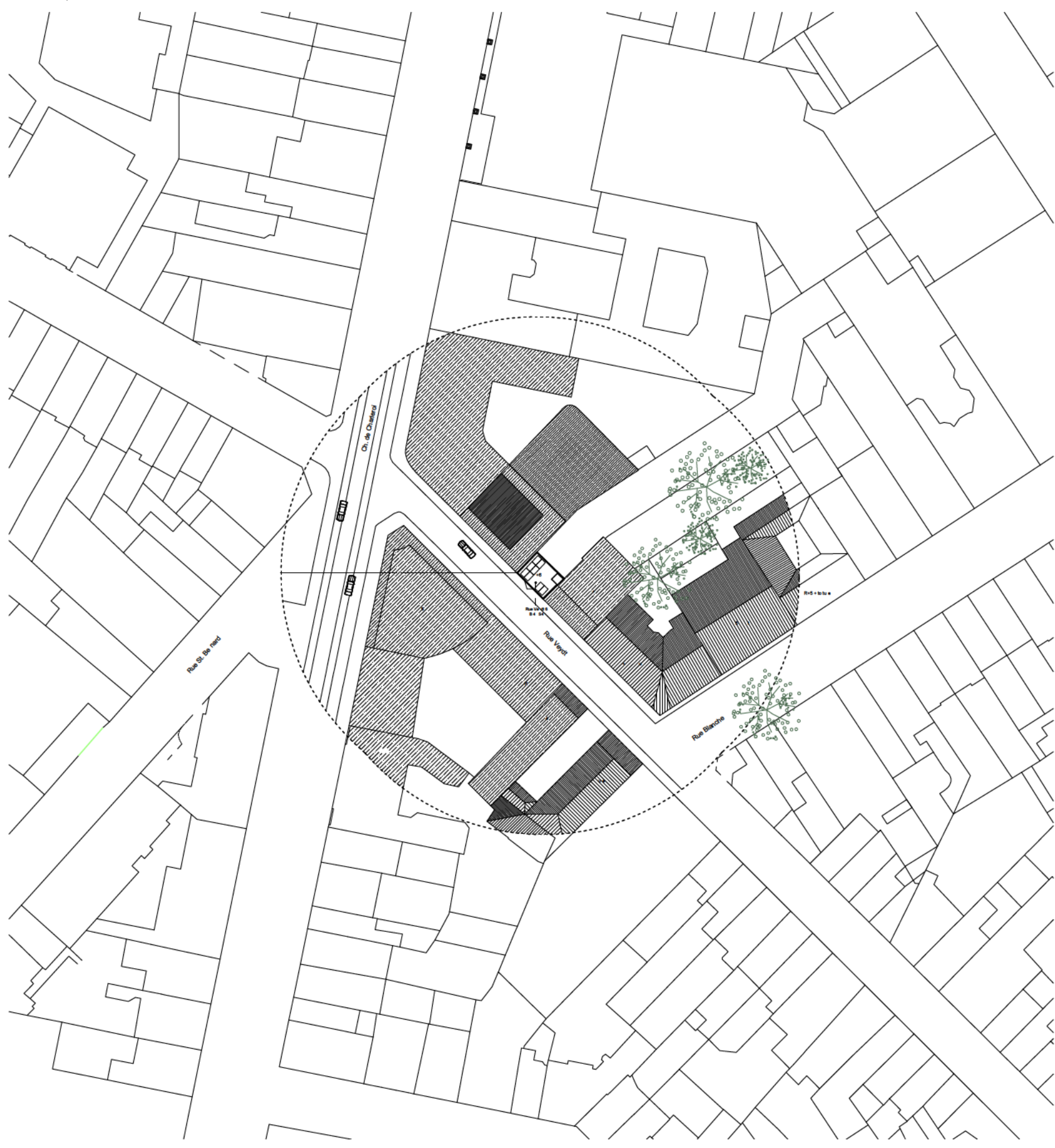
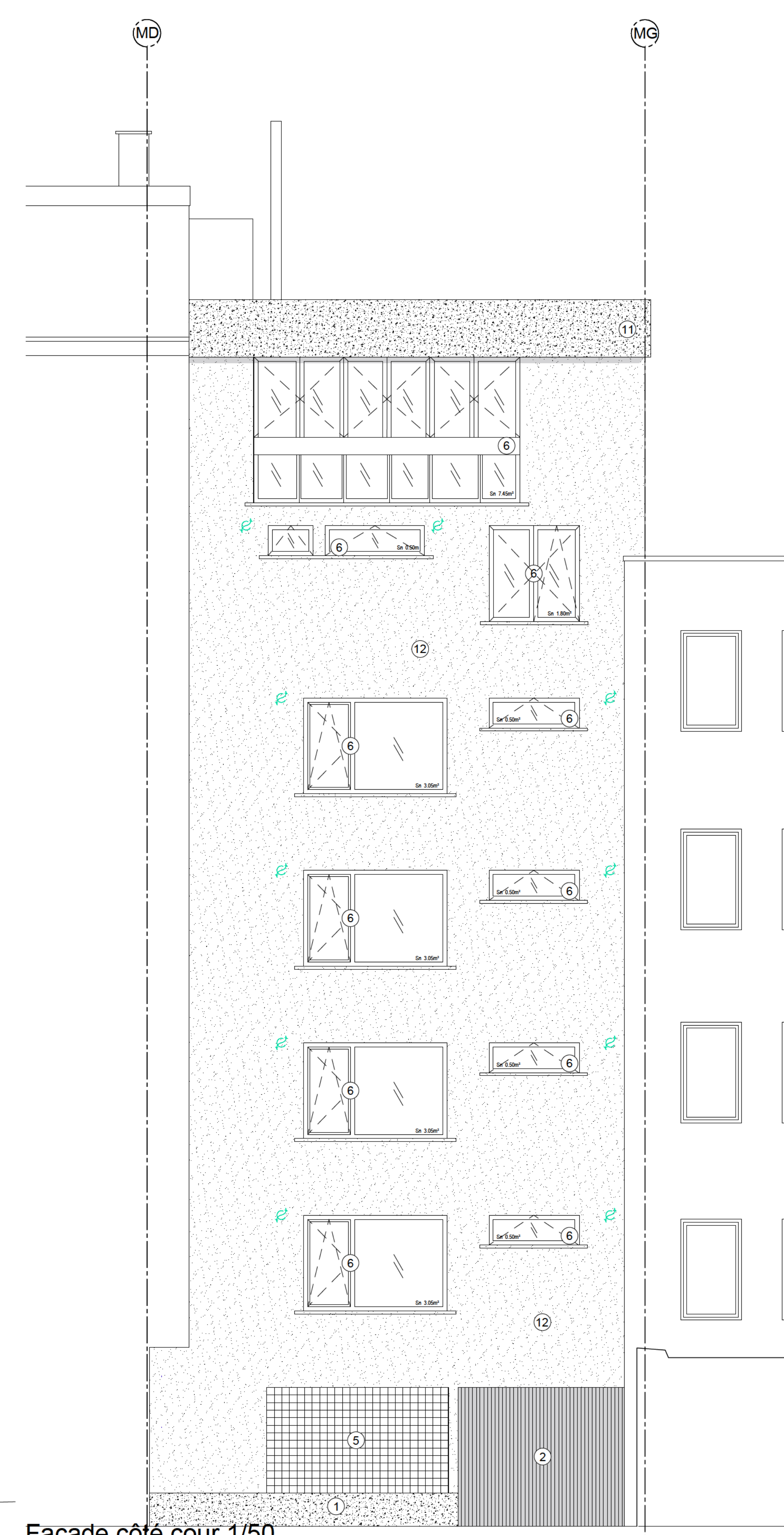
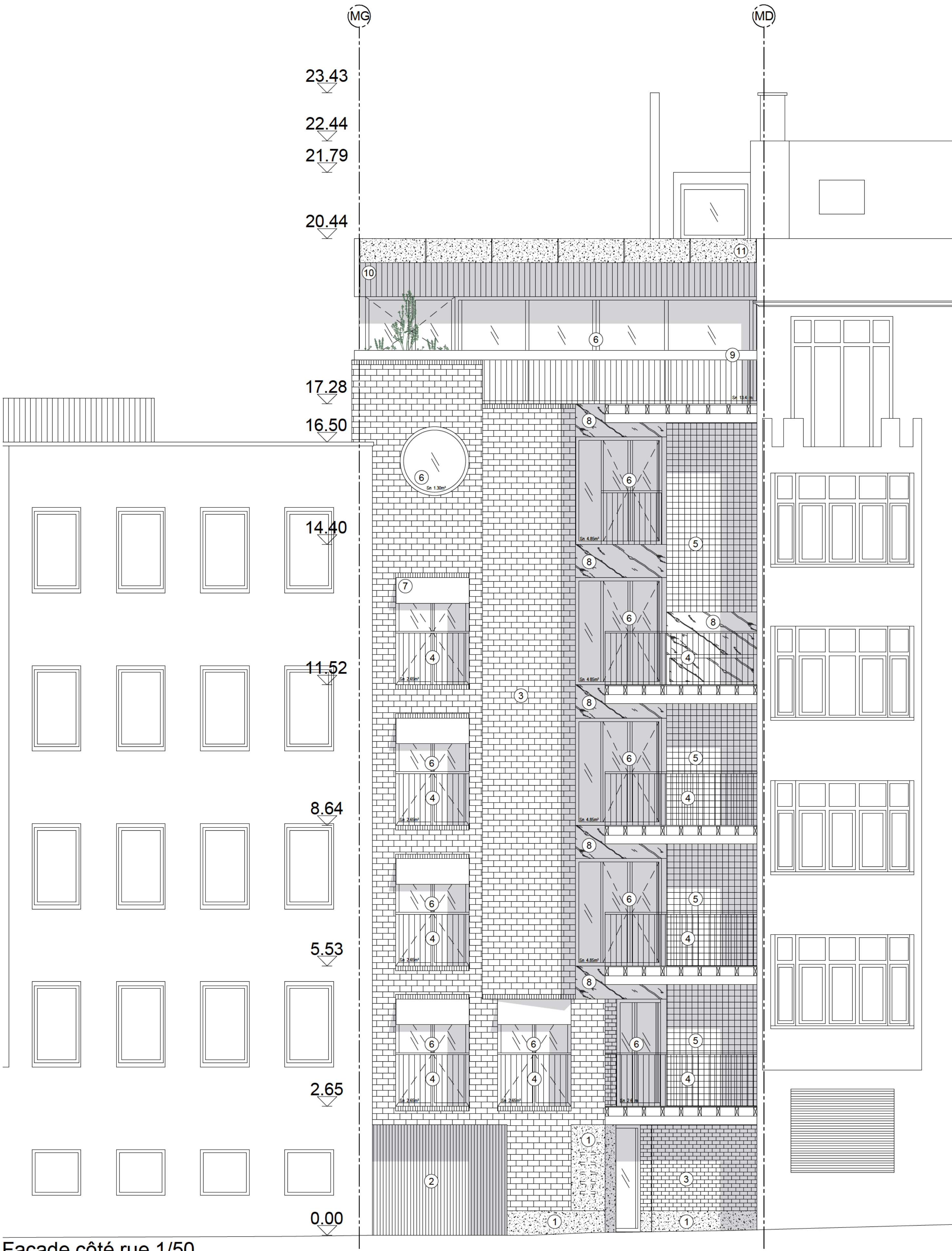
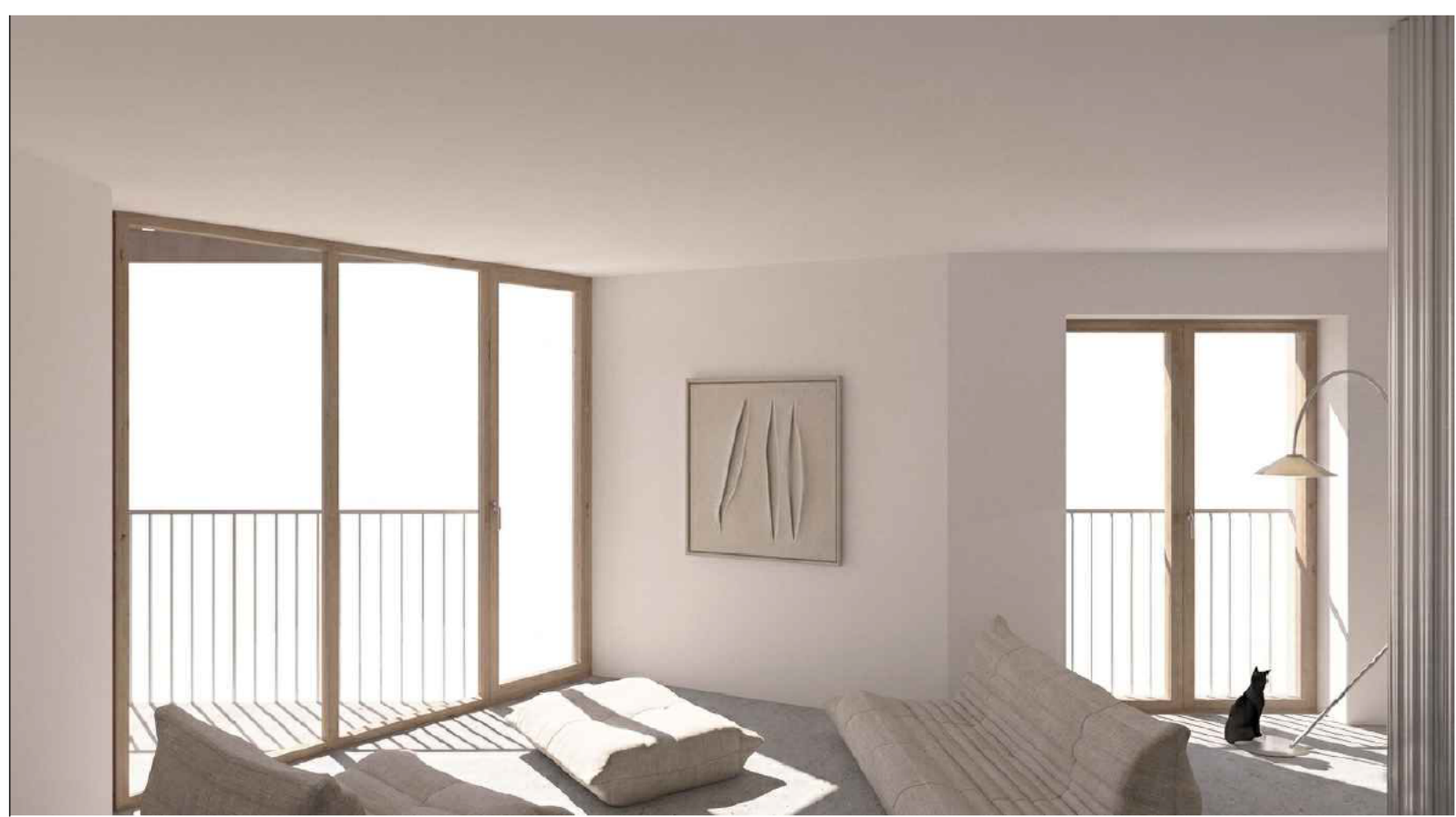
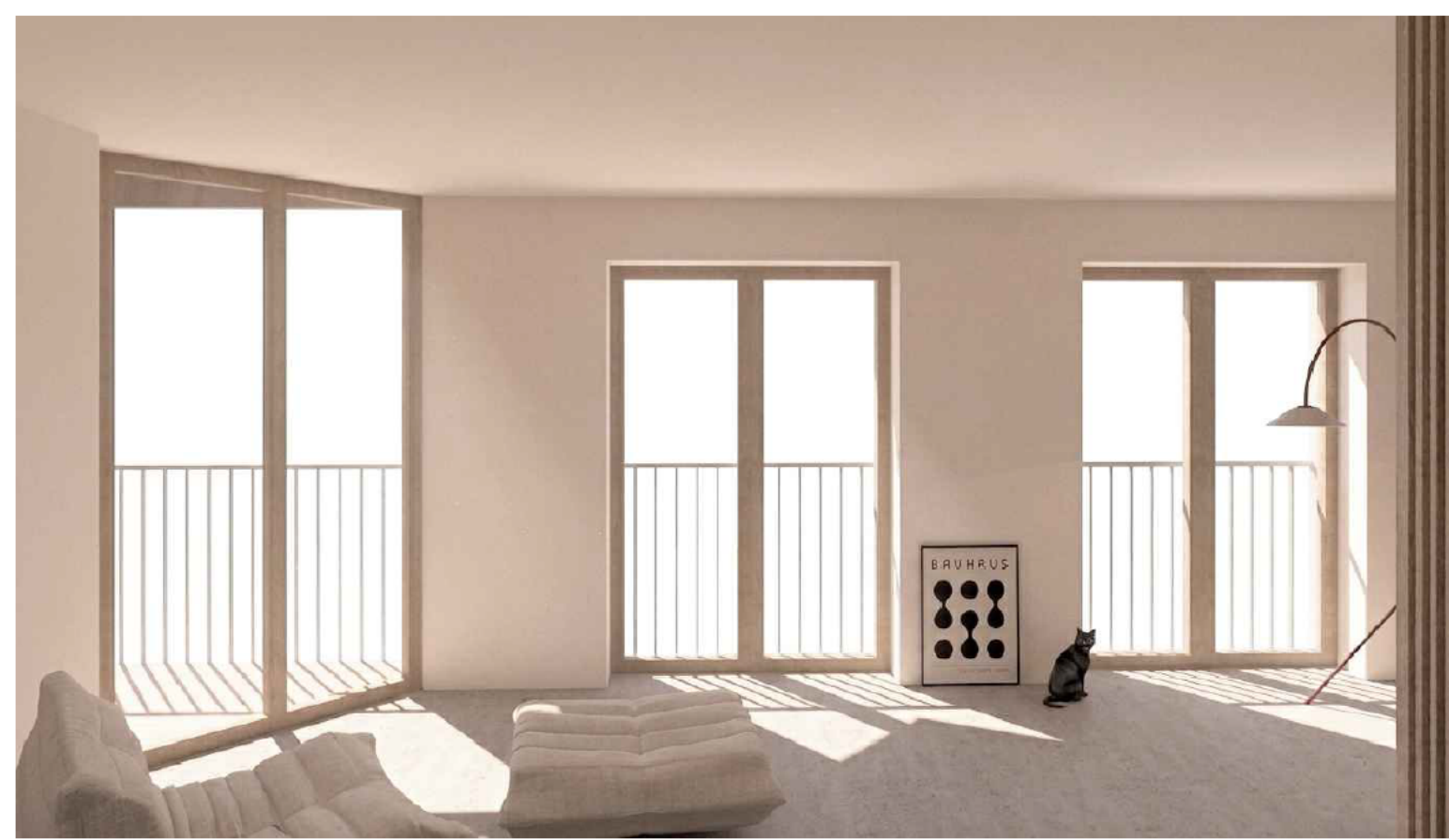
Sous-sol 1/50



R+4 1/50



Façade côté rue 1/50



MATERIAUX / FACADE	DESCRIPTION DES ESPACES
1 PIERRE BLANCHE	10
2 PORTAL GARAGE EN METAL	11
3 BRISSE EN THERMOCLIVET	12
4 GARDE CORPS EN ACIER THERMOCLIVET DREZ CLAIR	13
5 BLOCS DE VERRE NOIRS	14
6 CHASSIS EN BOIS NATUREL	15
7 STORES COULEUR BRUN	16
8 BOIS BRUTE COULEUR NATURELLE	17
9 GARDE CORPS EN ACIER THERMOCLIVET DREZ CLAIR	18
10 PAVES PLANCHES EXTENSIBLES COULEUR BOIS	19
11 FRAMBAUX EN THERMOCLIVET DREZ CLAIR	20
12 CREPI-ROUGE	21
13 ENDUIT ROUGE COULEUR	22
14 CHASSIS EN BOIS PEINT	23
15 TUBES ROUGES	24
16 PORTAL EN PVC BLANC	25

